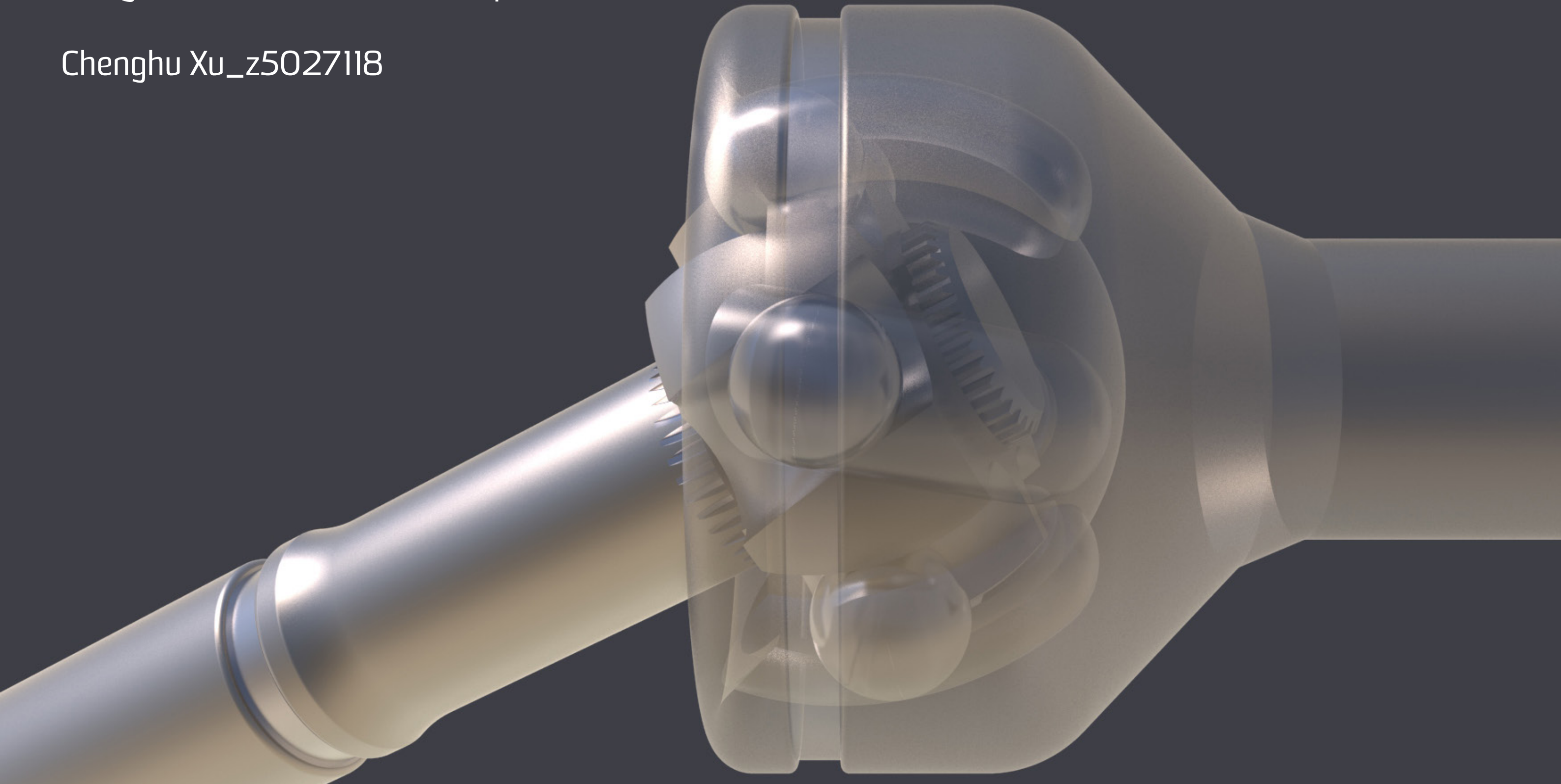


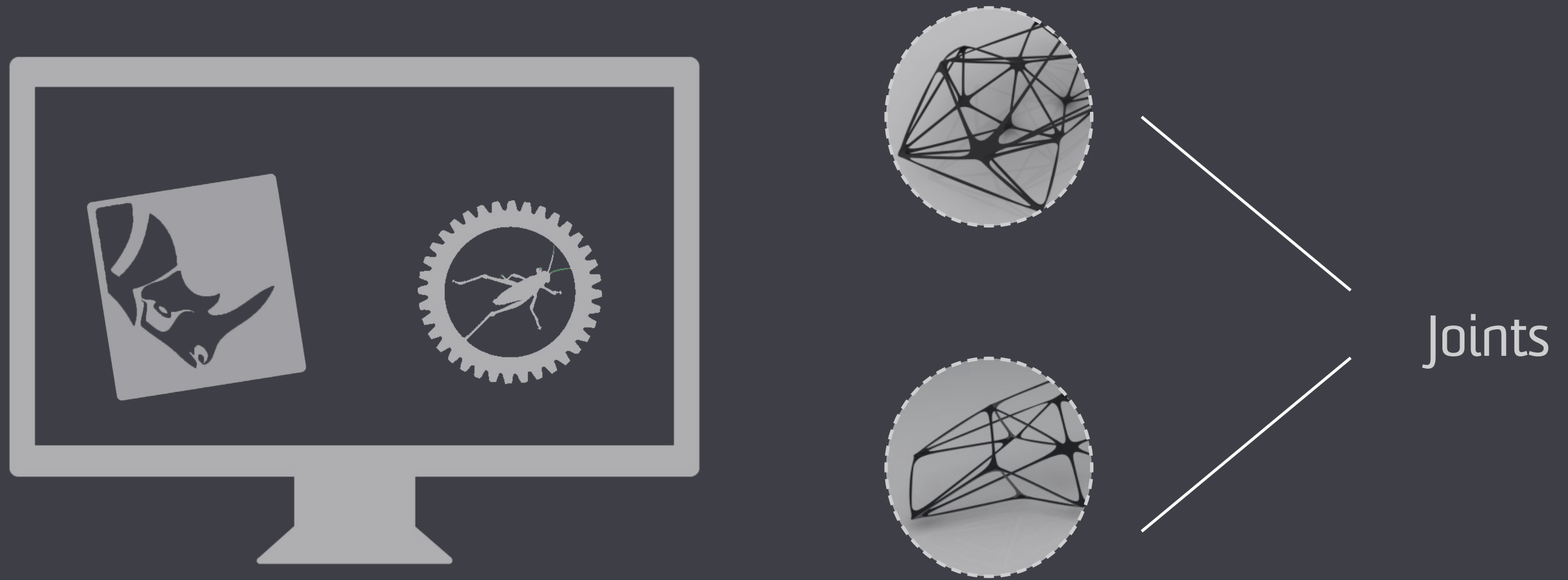
Graduation Project - Practice

CODE 3202

Design Documentation / Thesis presentation

Chenghu Xu_z5027118





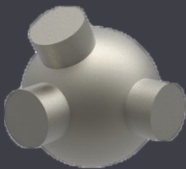
How can we help designers make joints for scale models for free forms ?

Scope

A grasshopper workflow for joint creation
of prototype models through integrating a
set of scripts

Control Separately

Joint 1



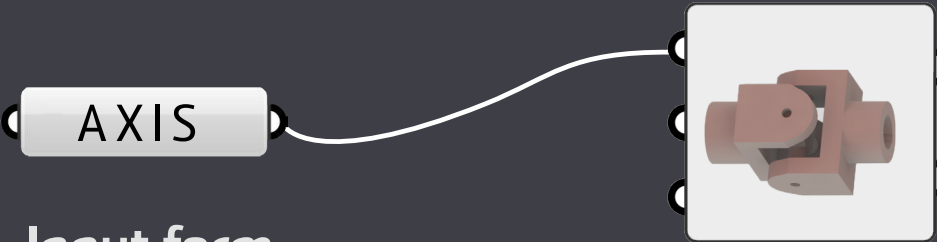
Joint 2



Joint 3

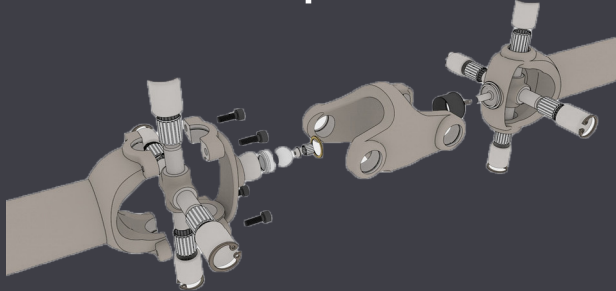


Variables



Input form

" Node Generator "



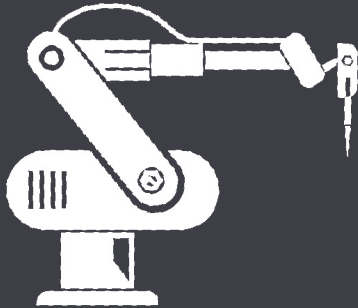
Form with nodes



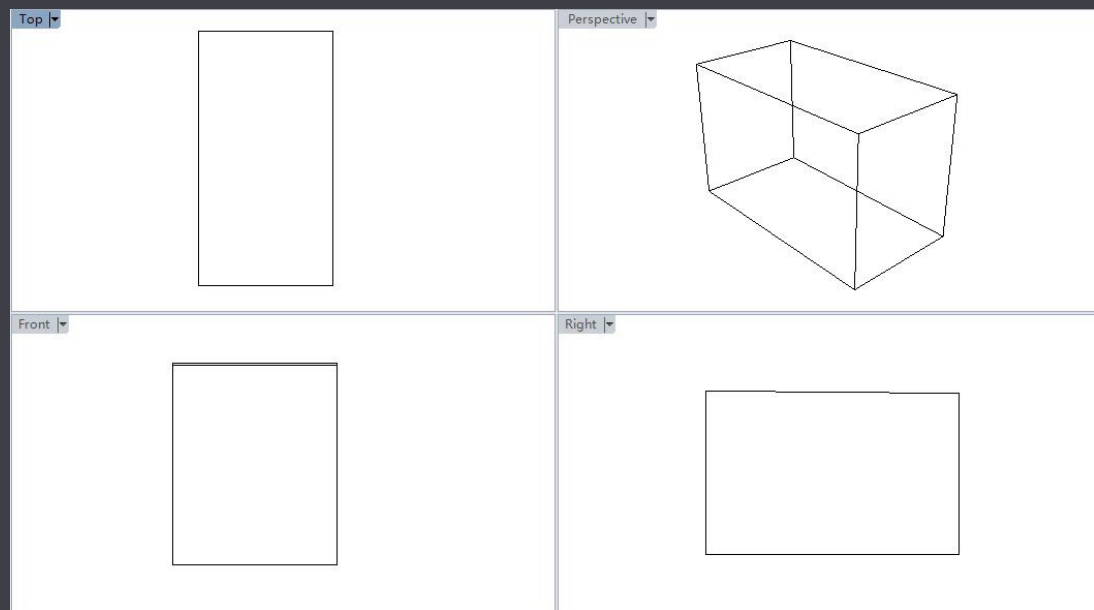
RH



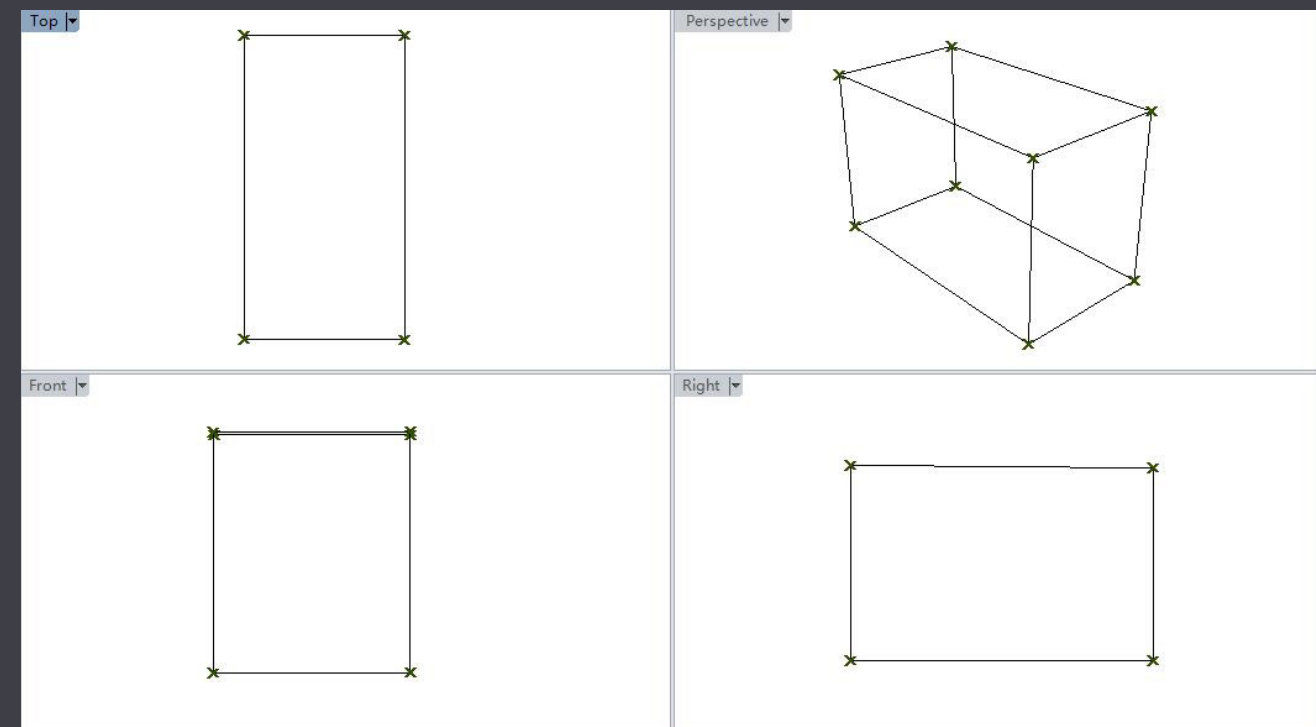
Small scale model (Rapid Prototyping)



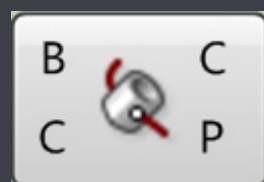
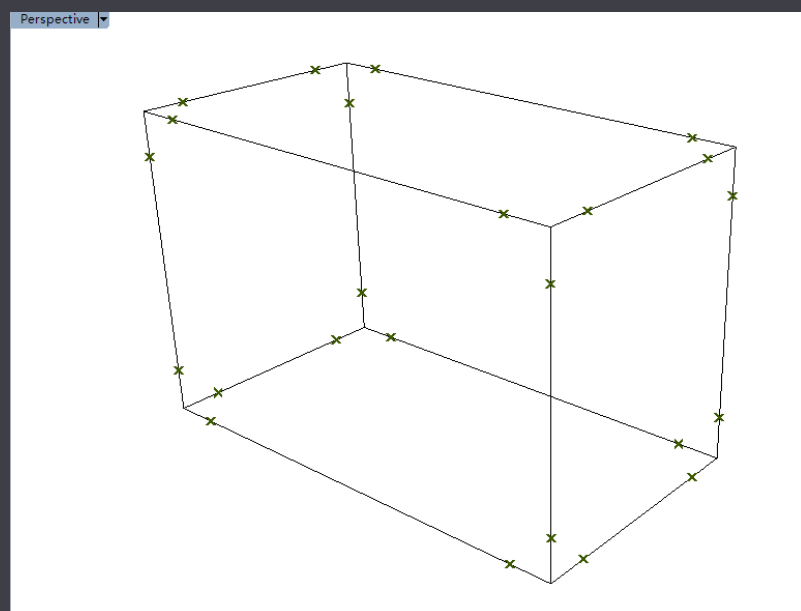
Larger scale model



CUV Input component #1



Confirm the intersecting points #2

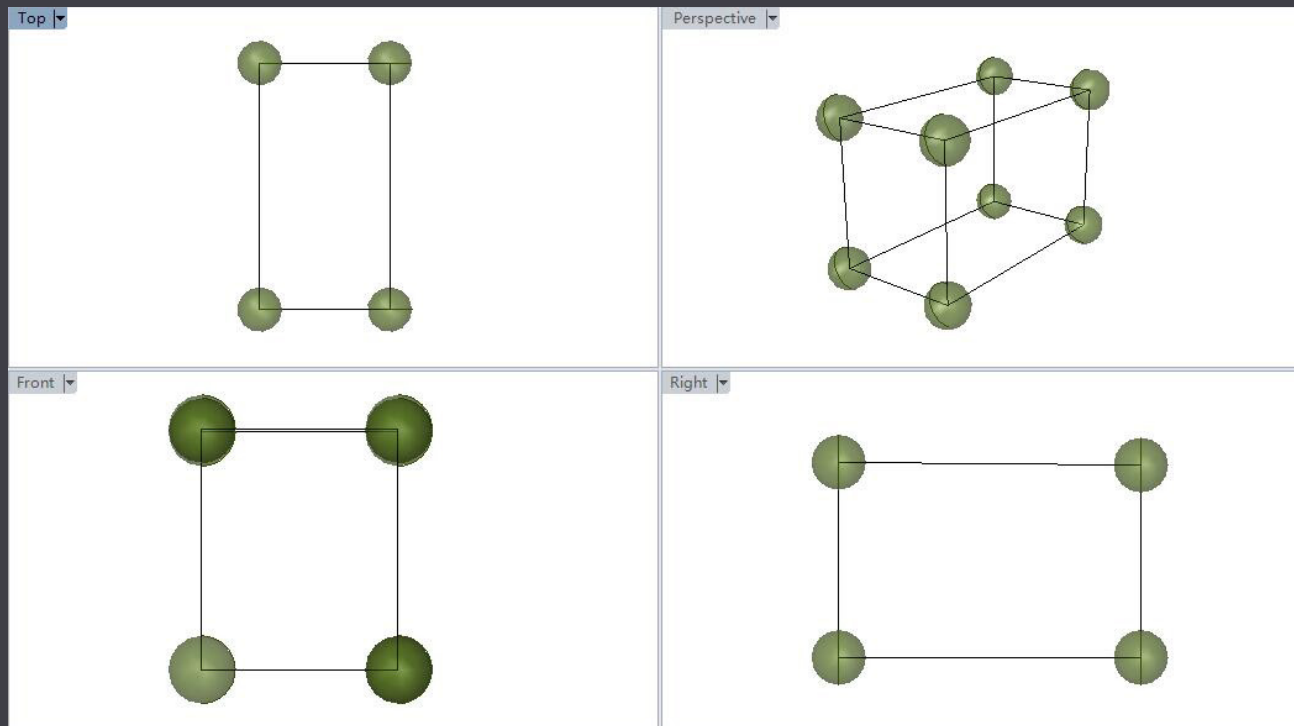


BCX component #3

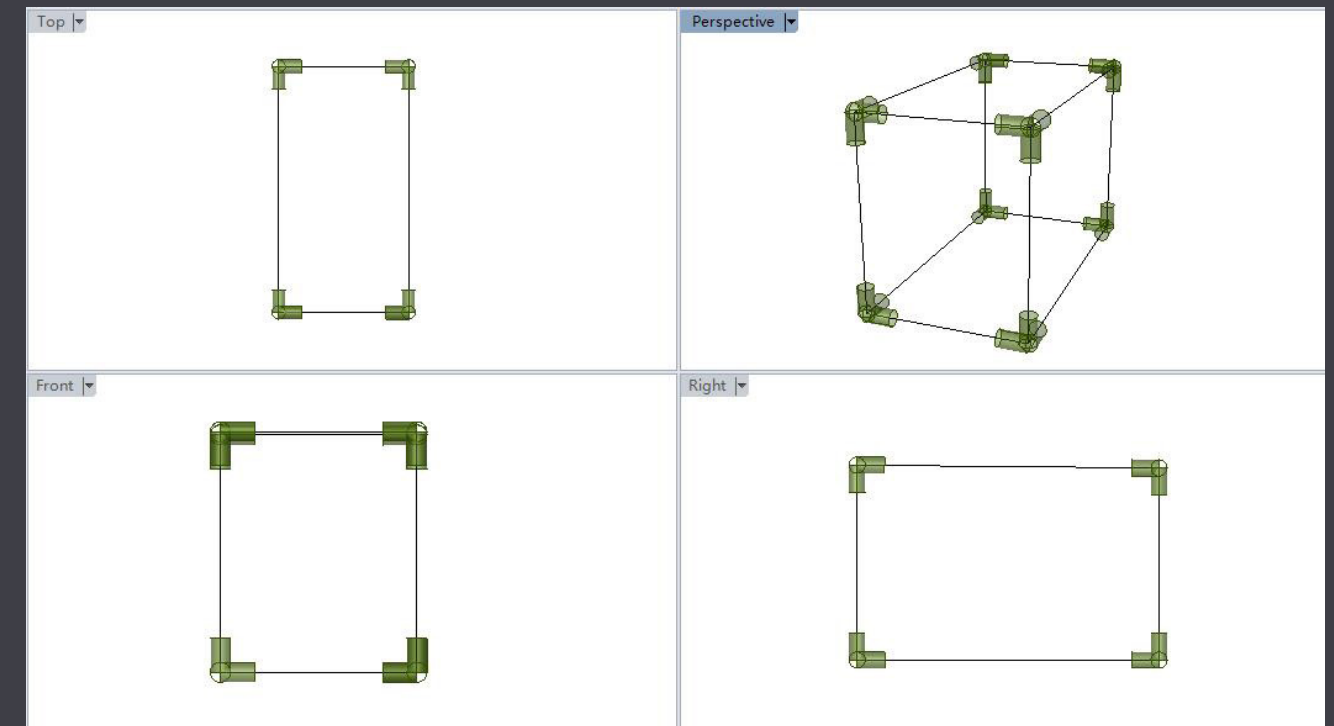
The RemoveDuplicateLines component

That is to say they are not part of a network and have no clue which lines they are connected to. The first part of the script sorts through the lines and intersection points and returns each point with the lines connected to it as vectors radiating away from the point.

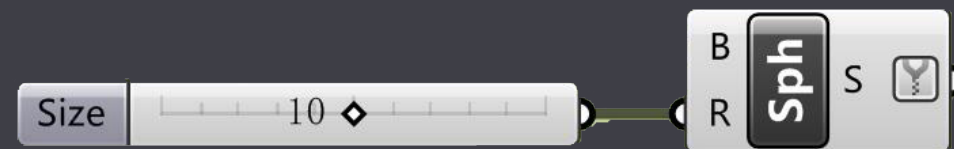
Solve the intersection events for a Brep or a curve



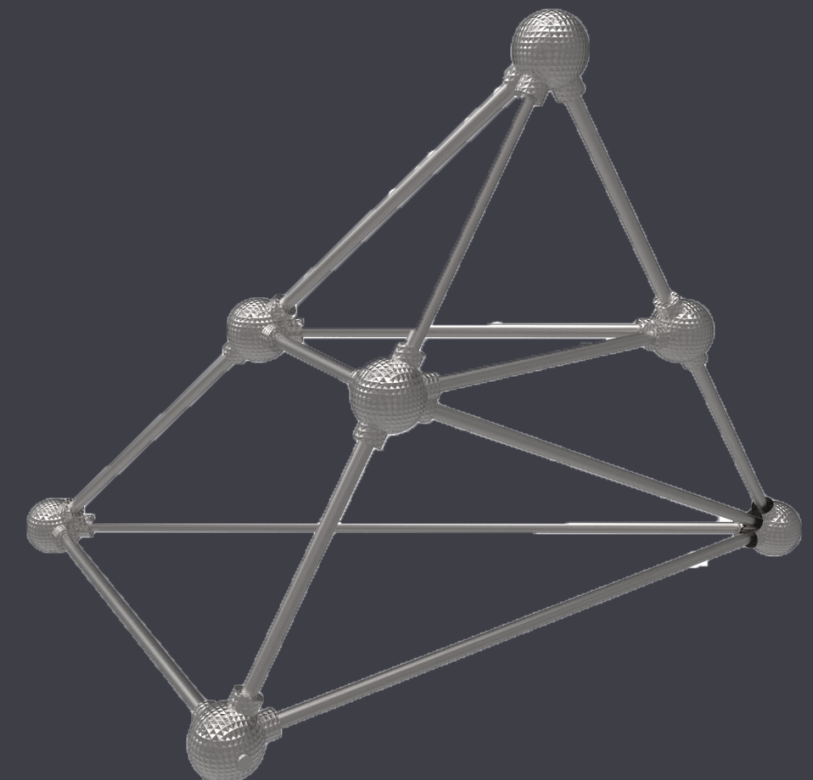
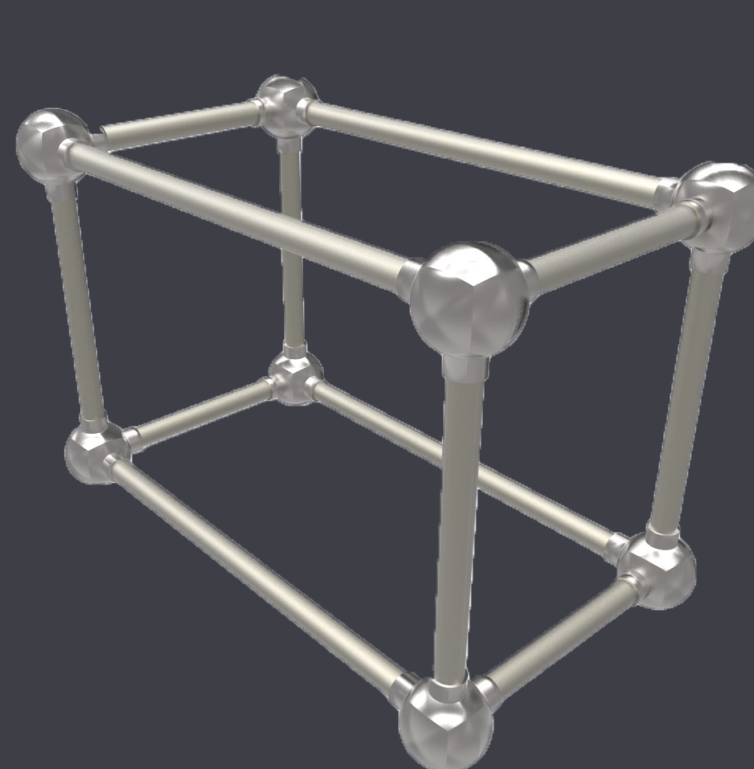
" A node joint having a plurality of threaded apertures "



"A connecting member for connecting the threaded end section to one of the threaded node joint apertures"



Transfer data from inputs to outputs



Metal Mate 10mm x 1m Galvanised Steel Round Solid

I/N: 1130453

\$5.25

Price correct as at Sun 05 Nov 2017 8:08:26pm

Qty: 1

Add to Wish List

Not all products available in all stores



Get It Home

We can help you get it home

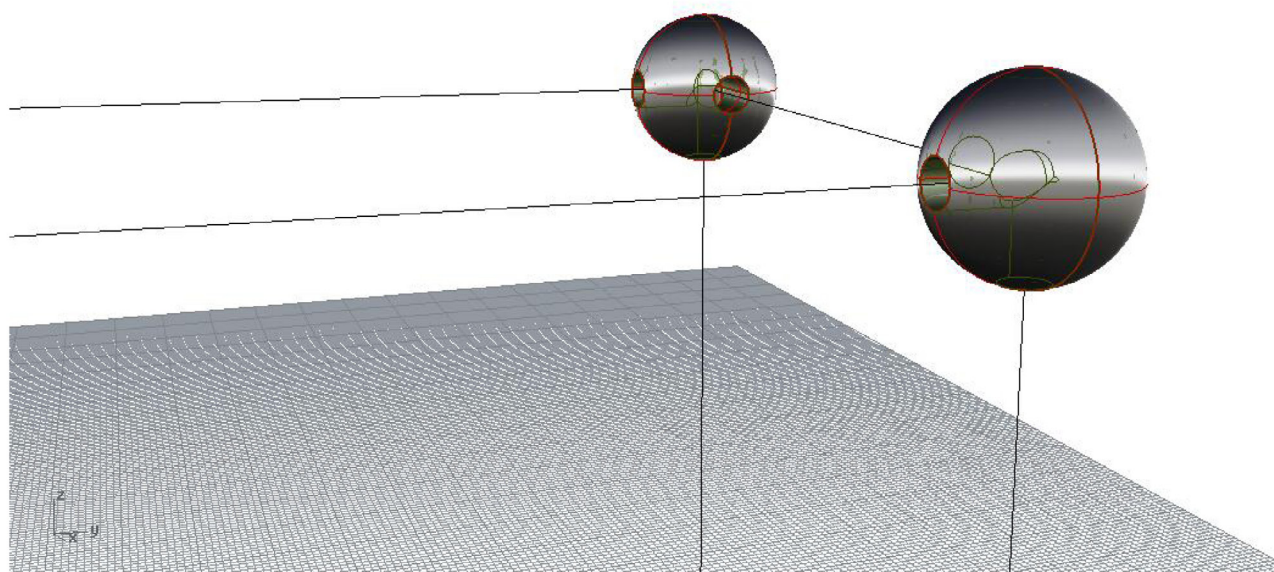


Solid tube



Sphere with holes

Perspective



Metal Mate 31.8 x 1.2 3m Galvanised Steel Round Tube

I/N: 1130458

\$79.02

Price correct as at Sun 05 Nov 2017 7:49:14pm

Qty: 1

Add to Wish List

Not all products available in all stores



Get It Home

We can help you get it home

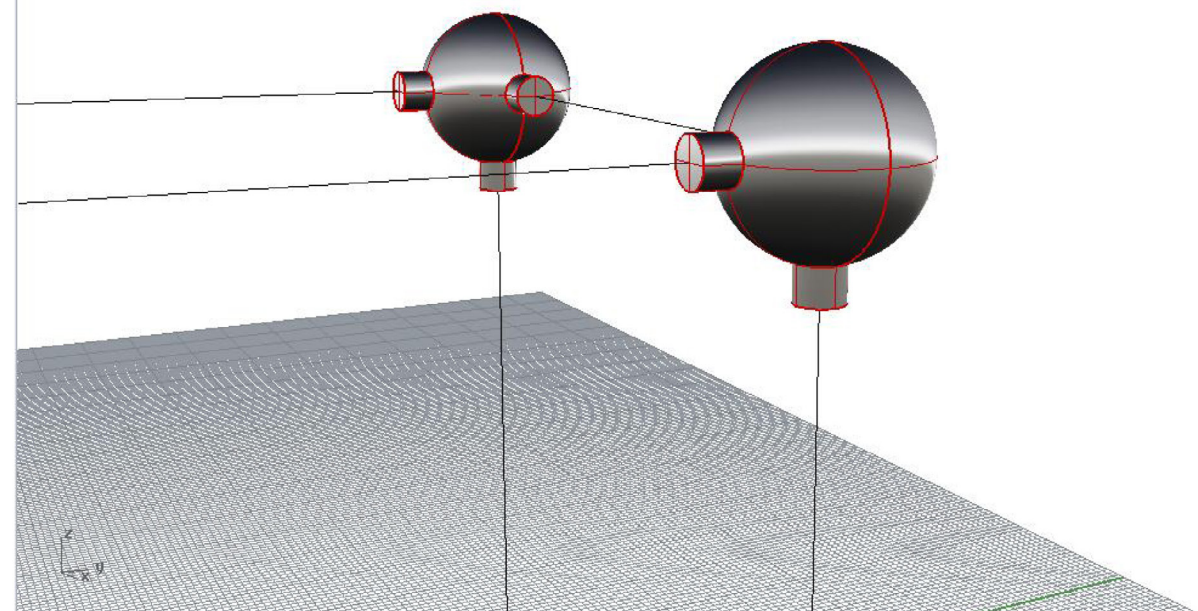


Hollow tube

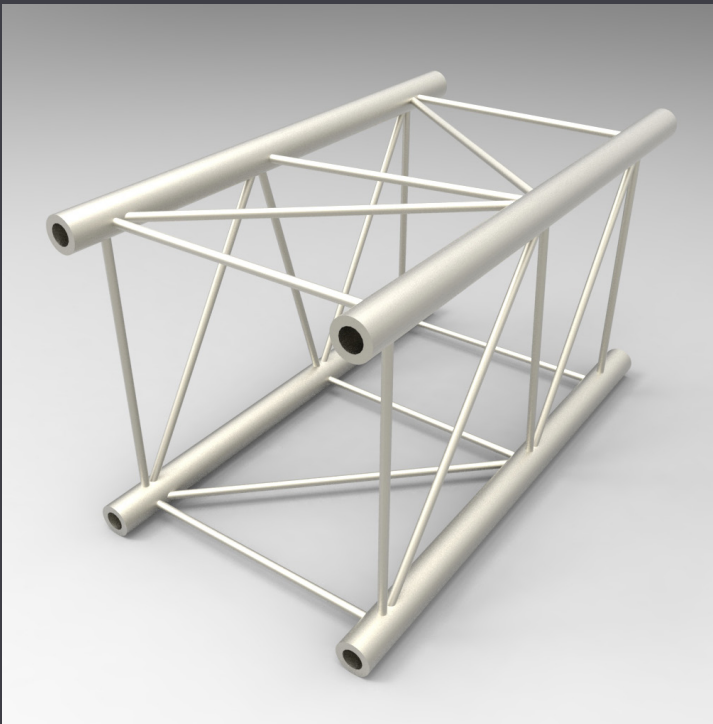
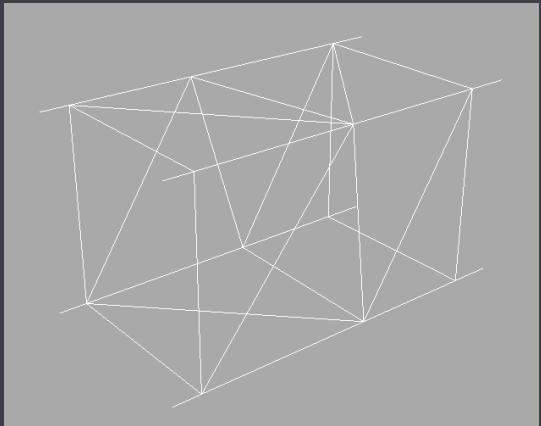
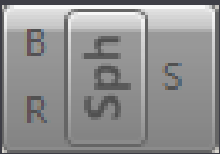


Sphere with tubes

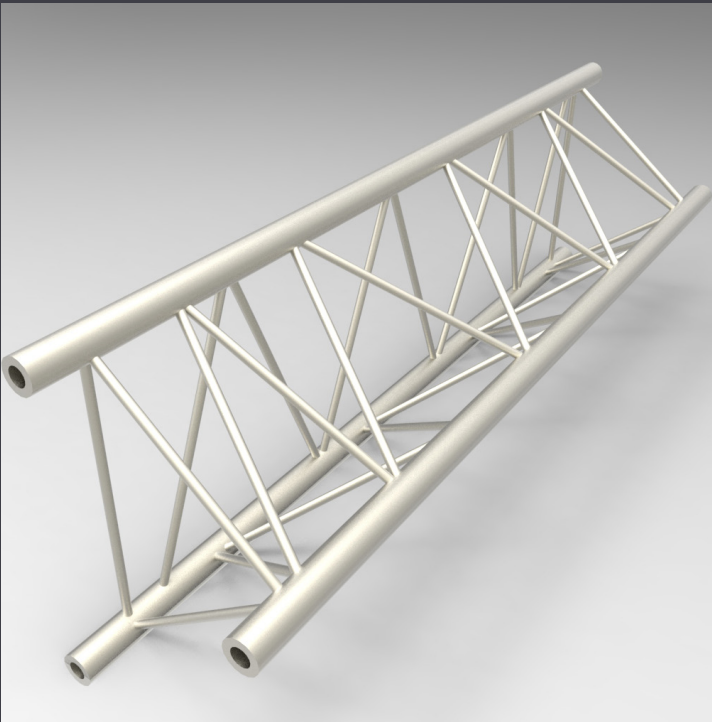
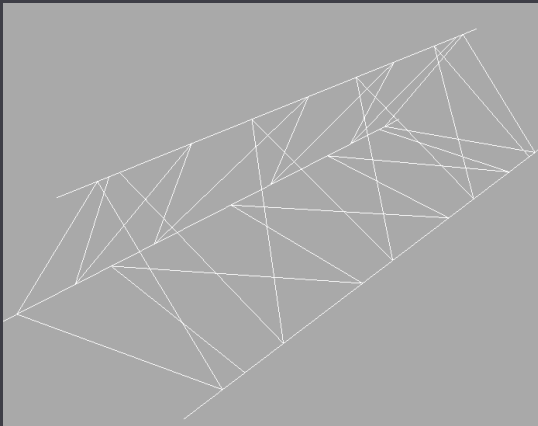
Perspective



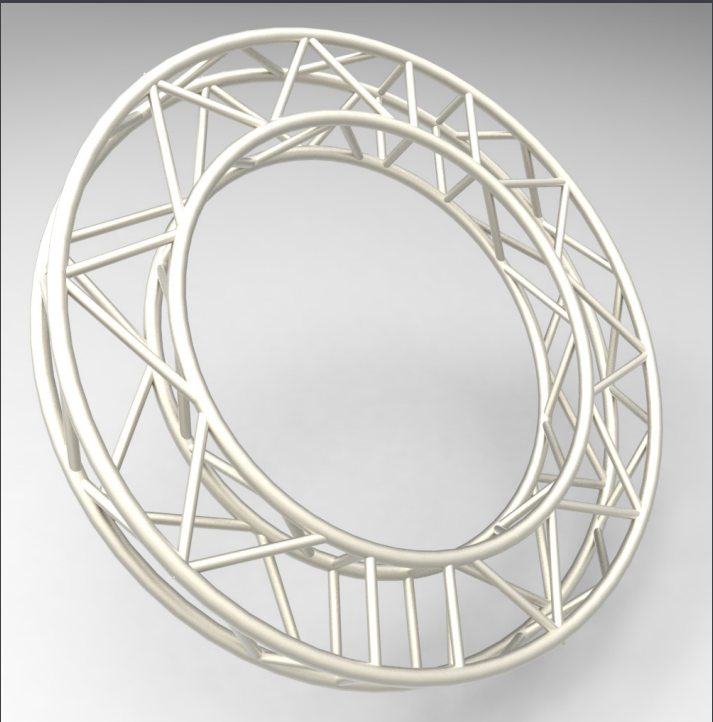
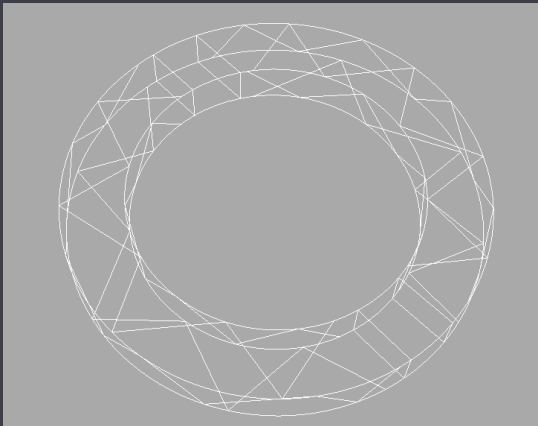
“ A truss is a support member which combines one or more triangles to form the structure of a roof. Most conventional trusses are constructed using wood. If wood is not available, then perhaps you can substitute it for metal or another material. ”



Square Truss

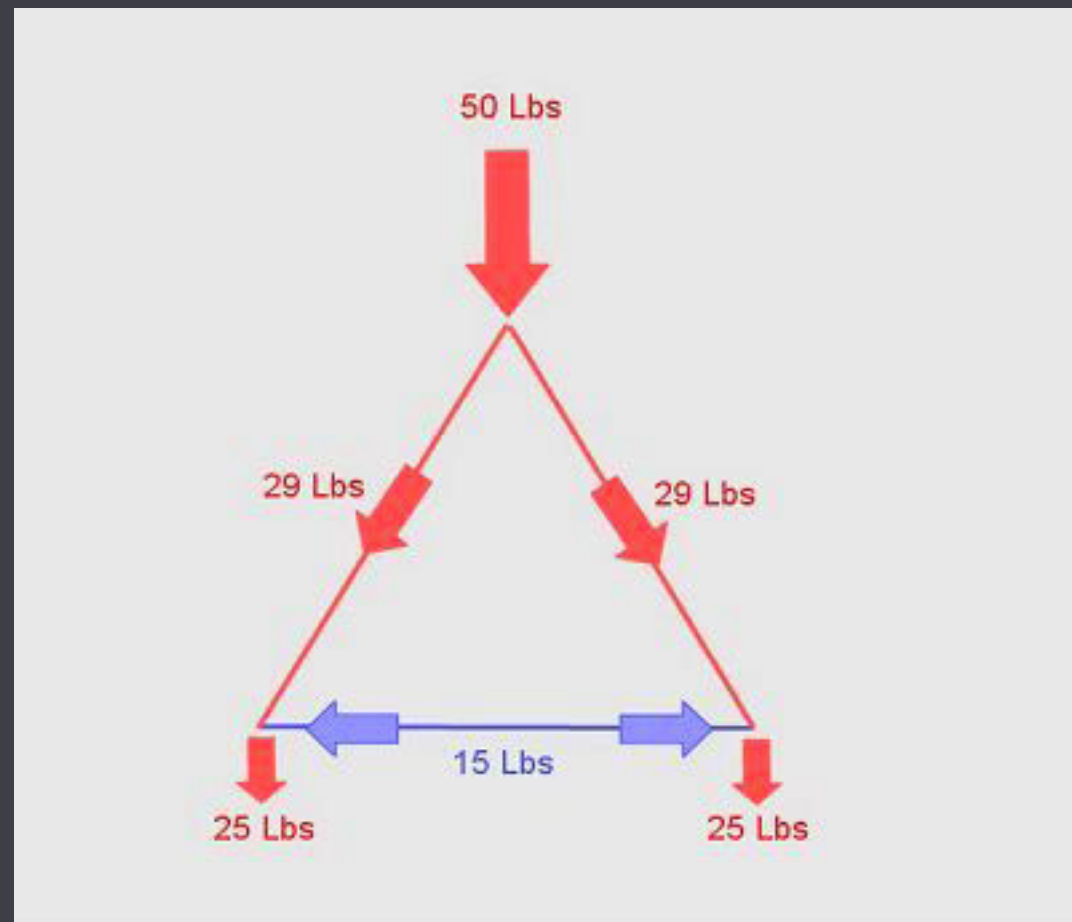
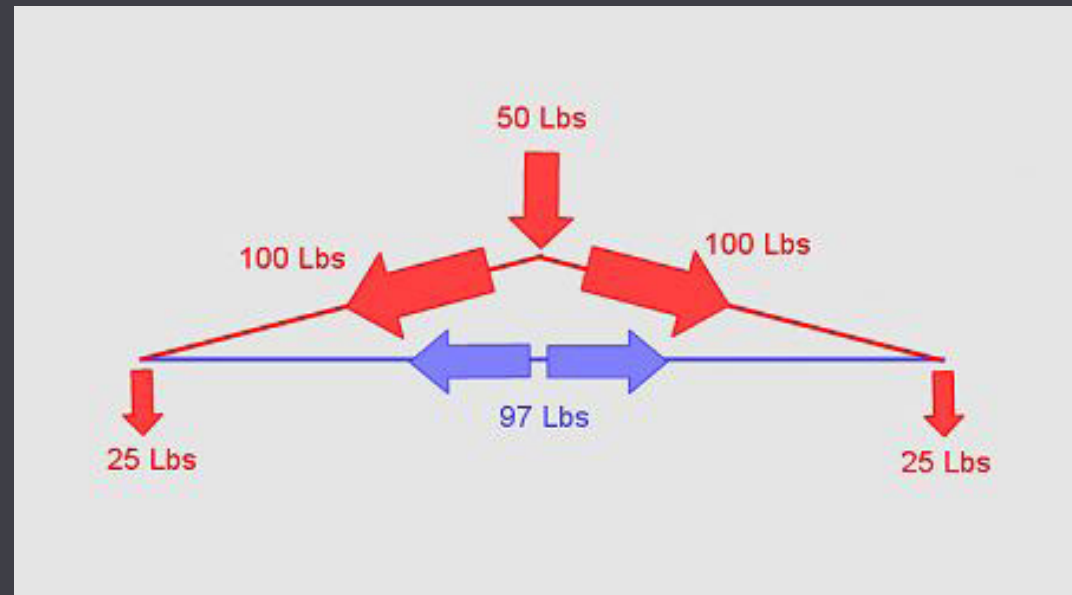


Triangular Truss

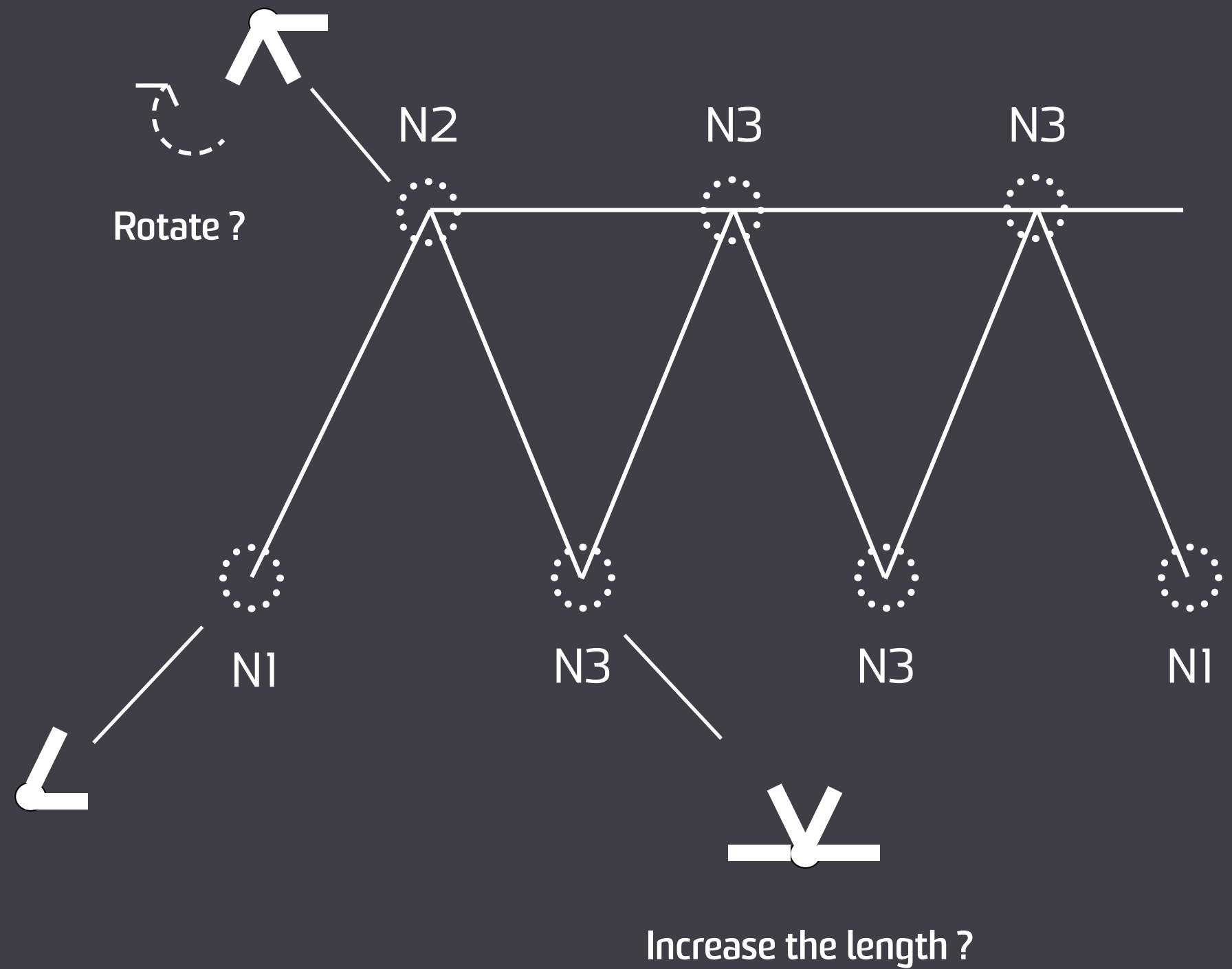


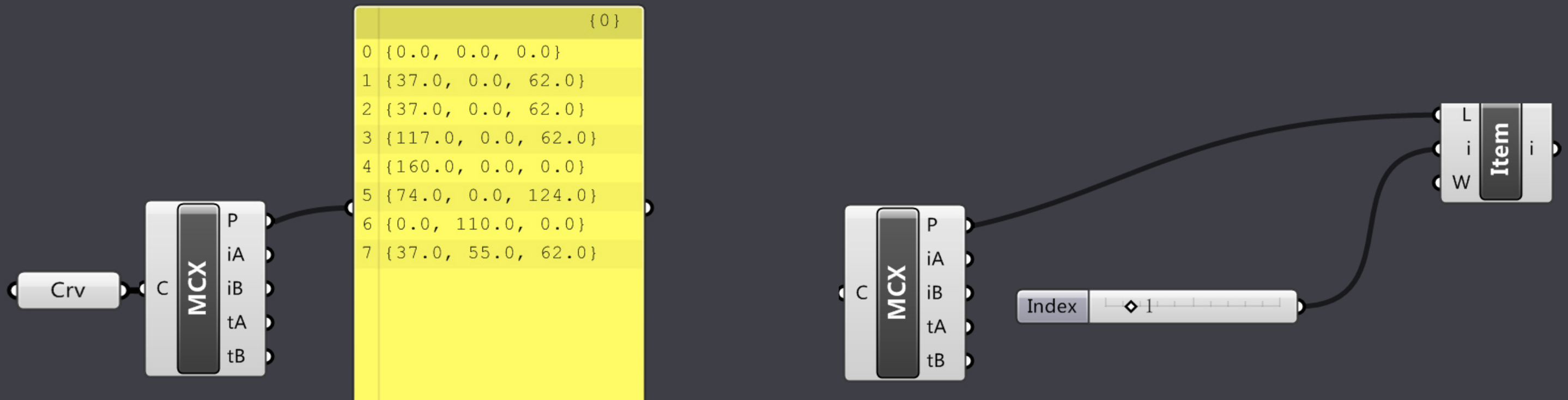
Circle Truss

Separately Control



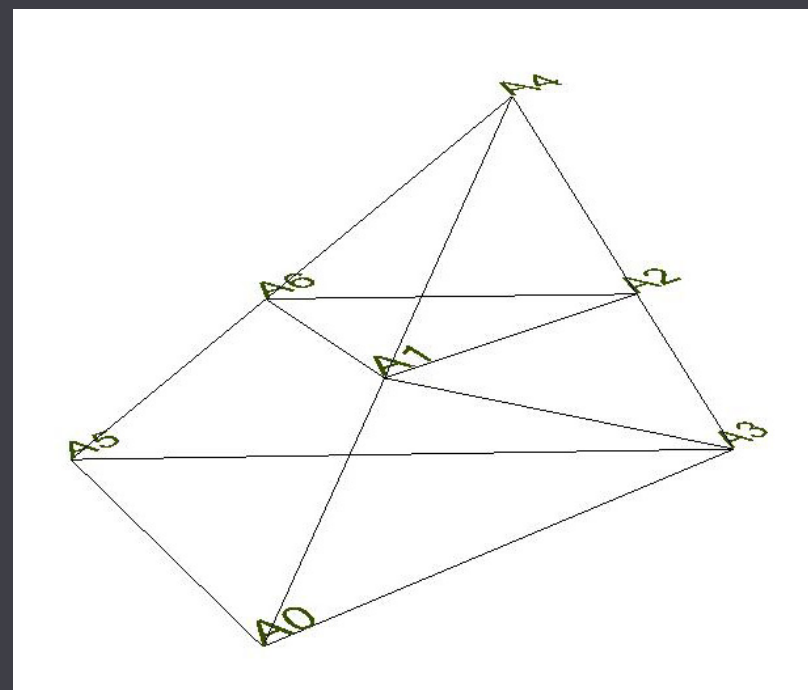
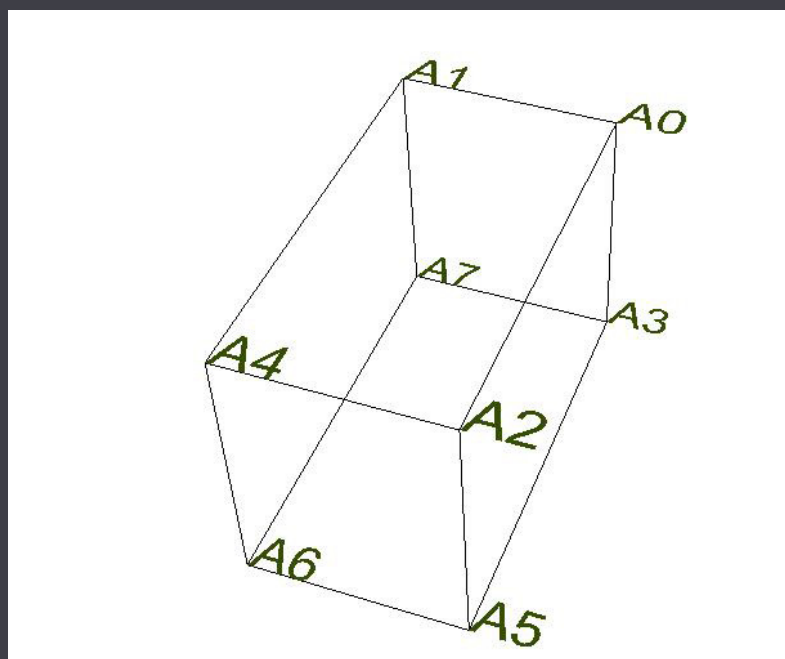
Different loads in different structures



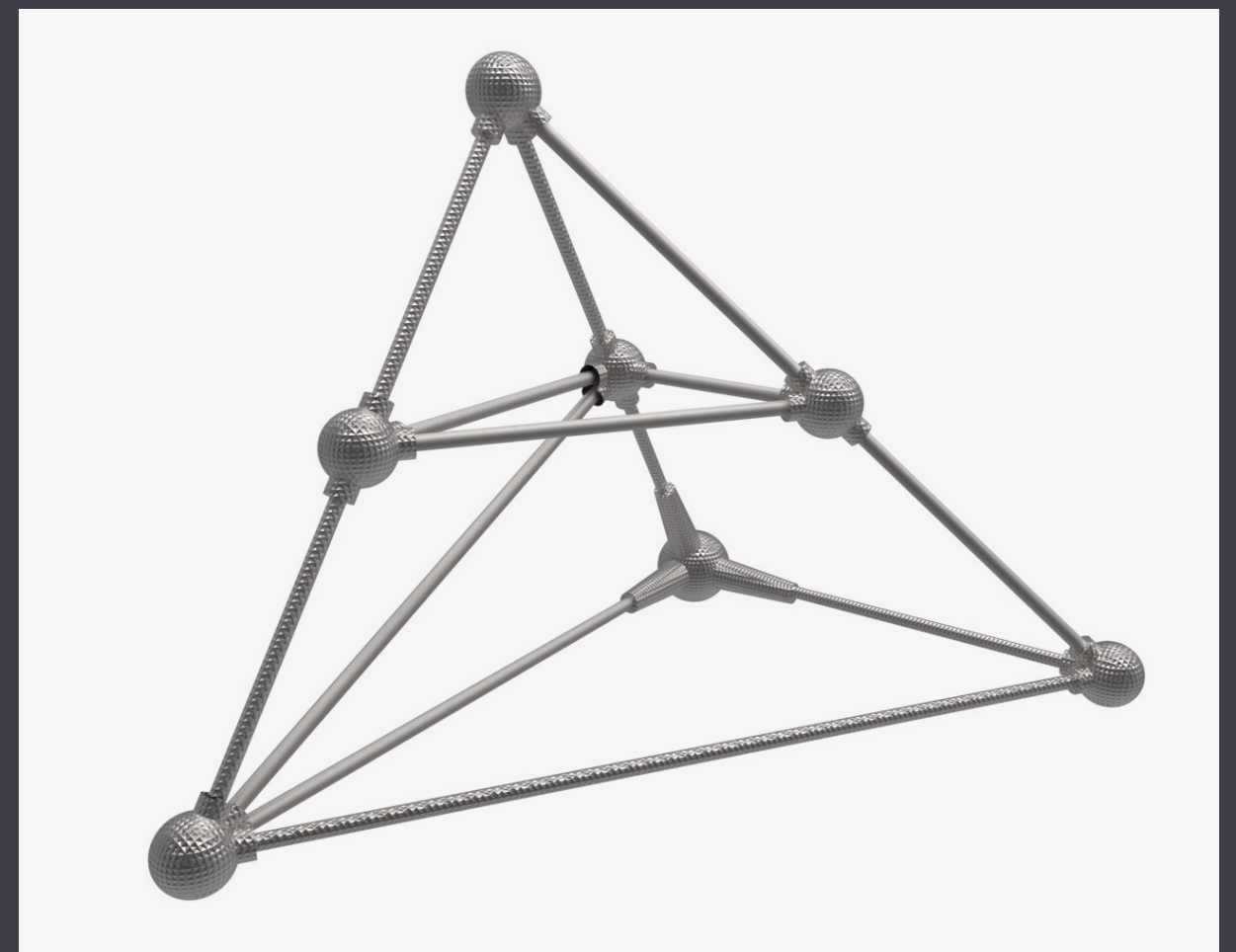
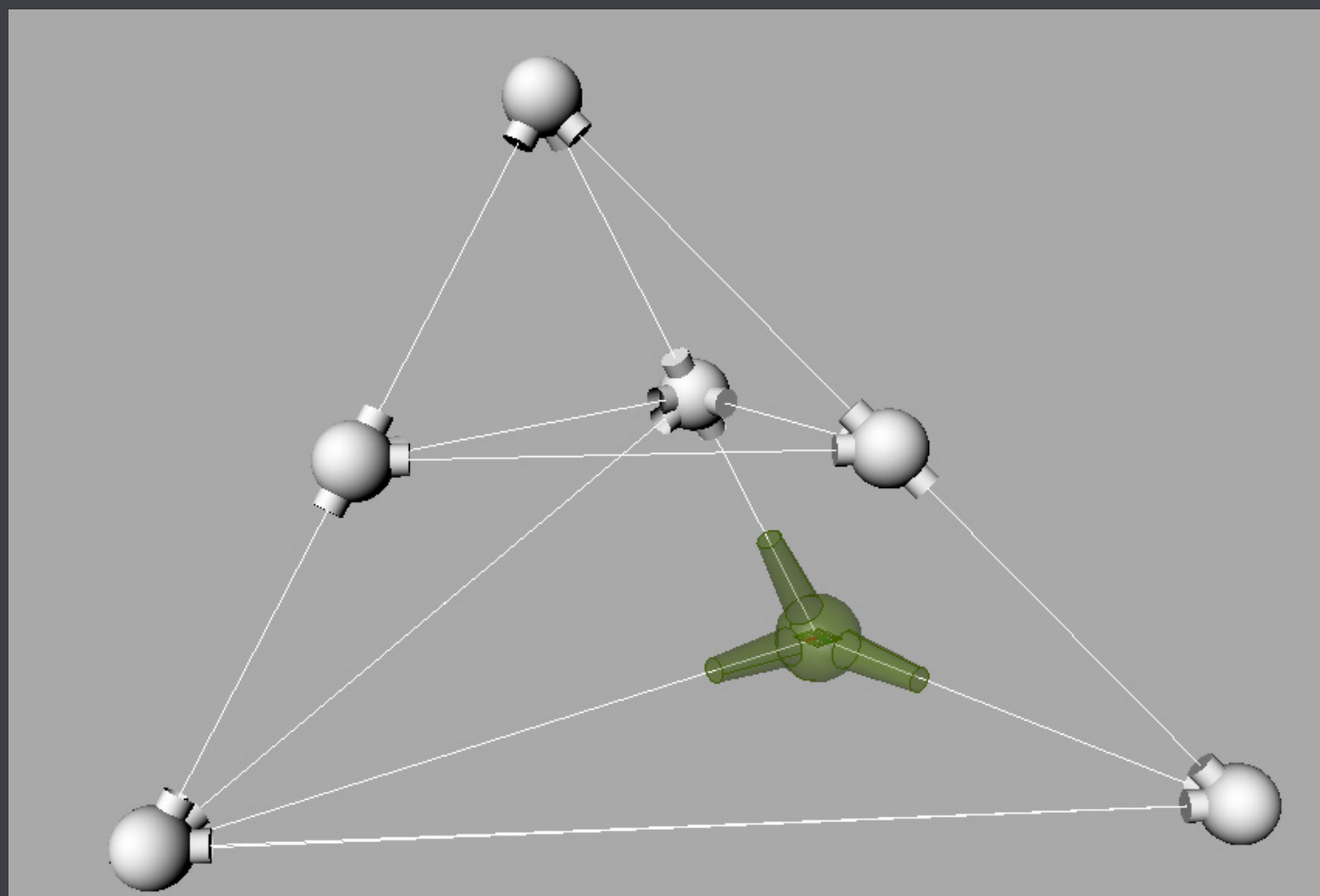
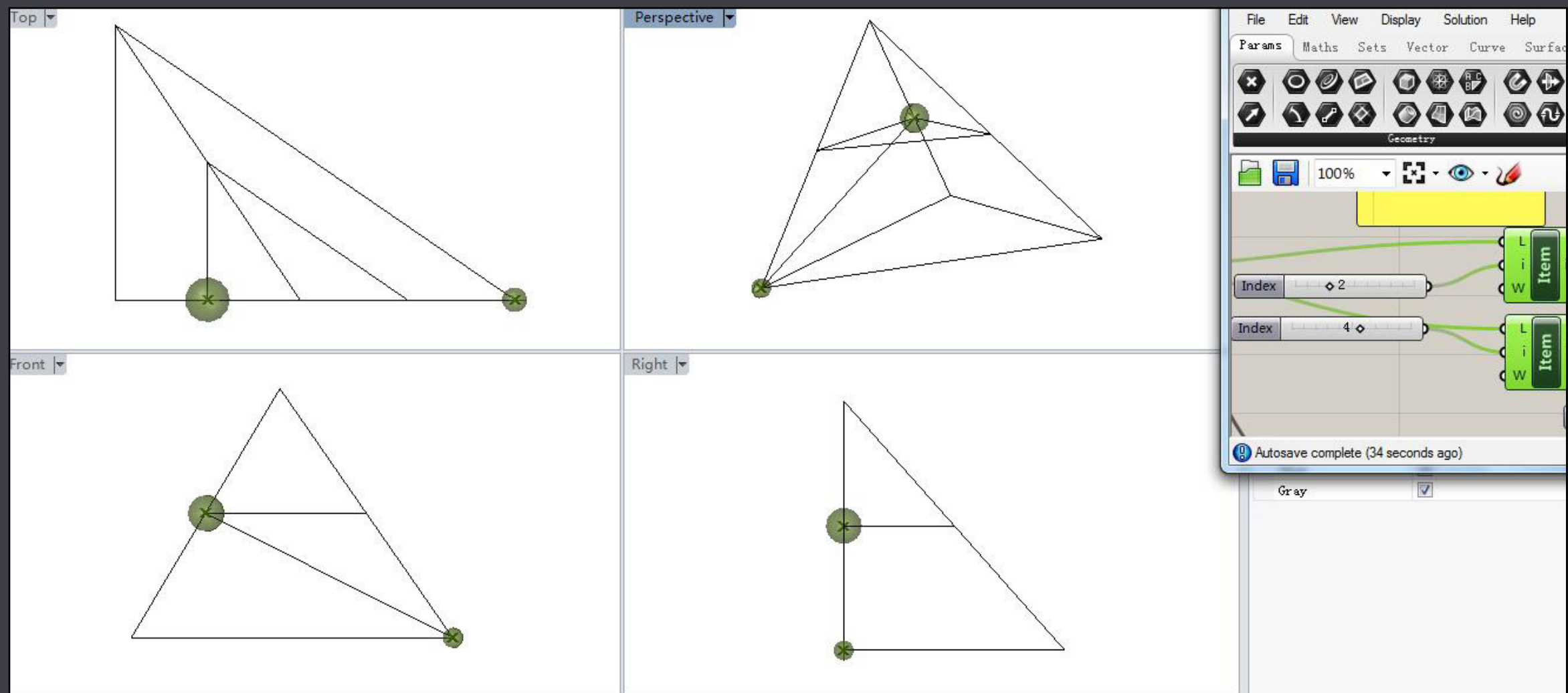


List Item

The amount of nodes and the coordinate of intersecting points

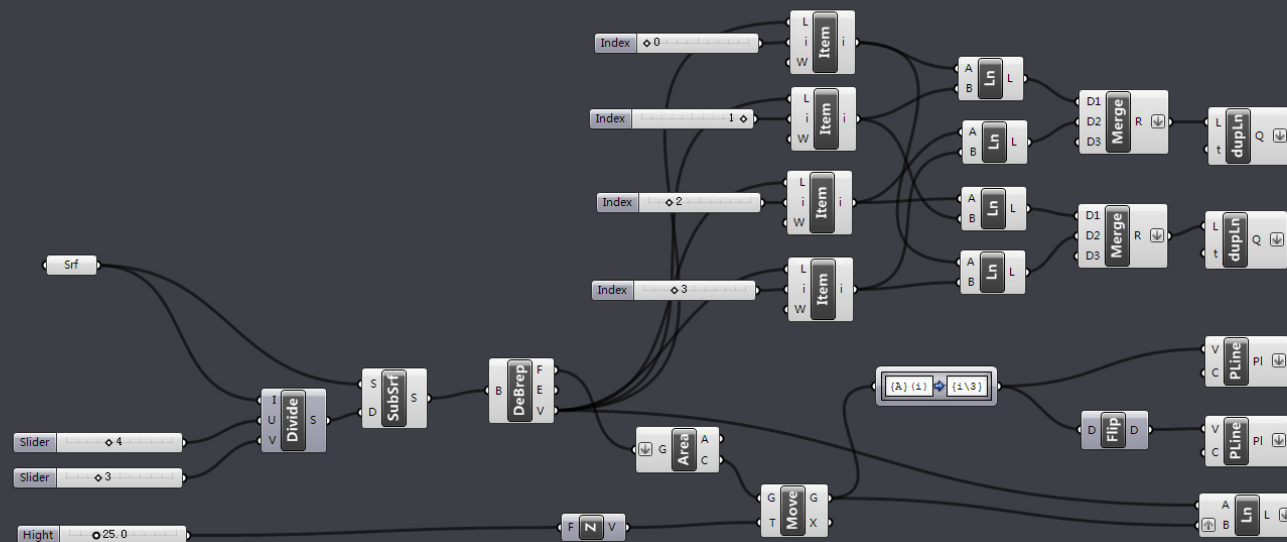


Node position

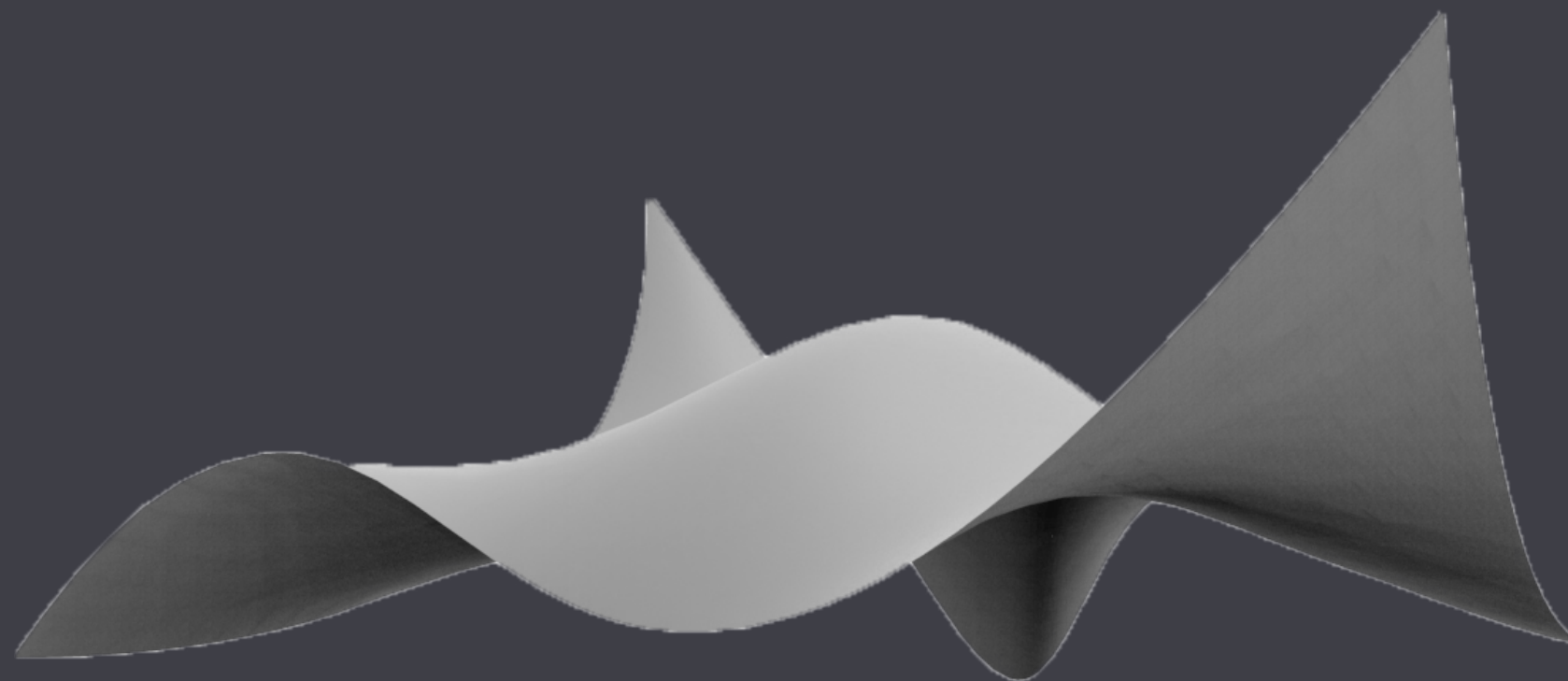


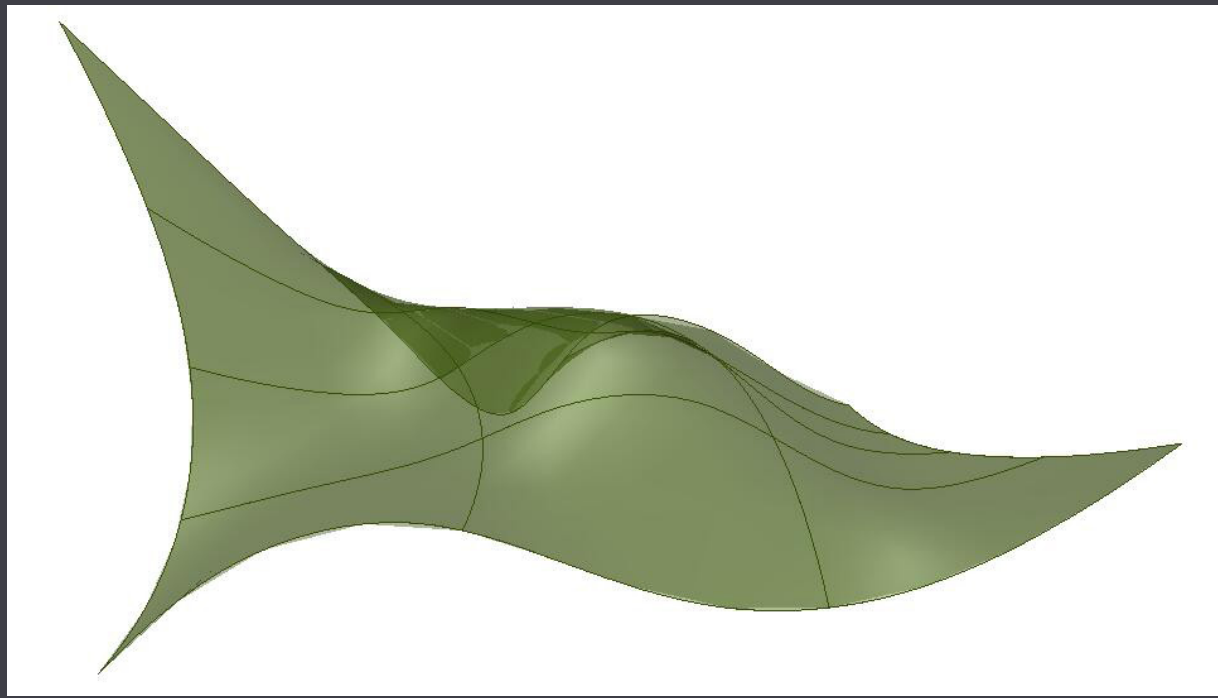
Shell - "Space frame are akin to shells in structural behavior, indeed so much so that they may be described as 'sister under the skin'."

-Eekhout M; Ramaswamy,G,S. 2002

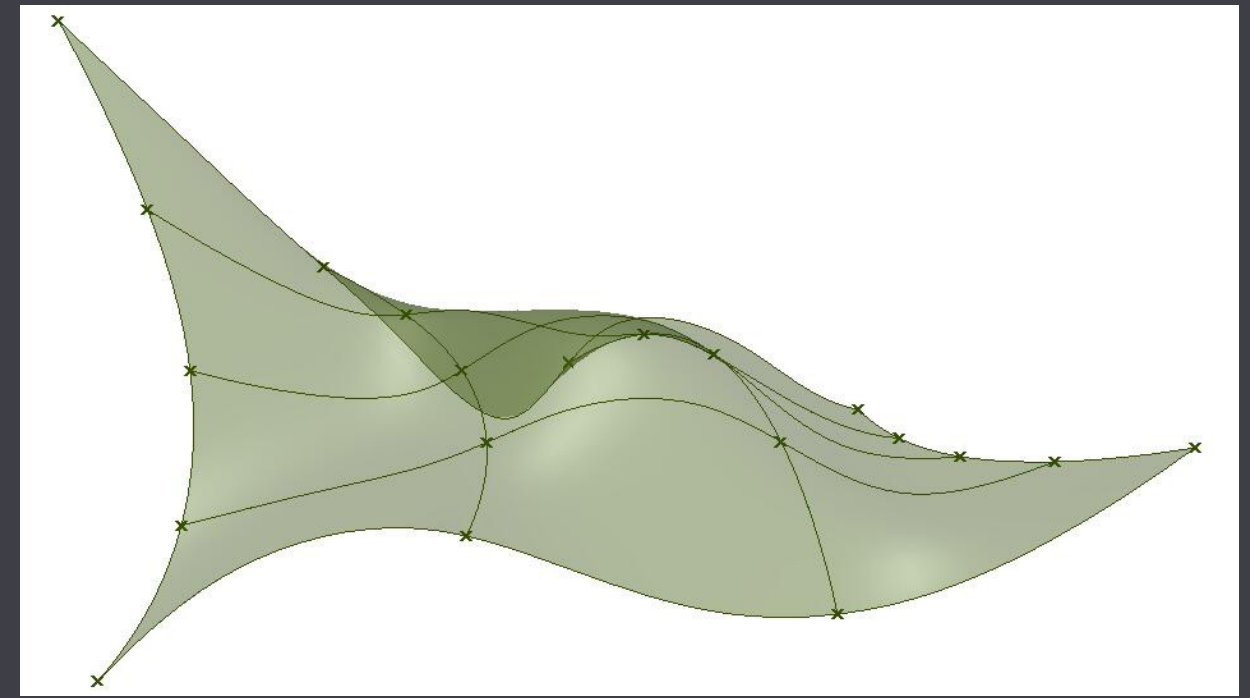


Extract script for shell

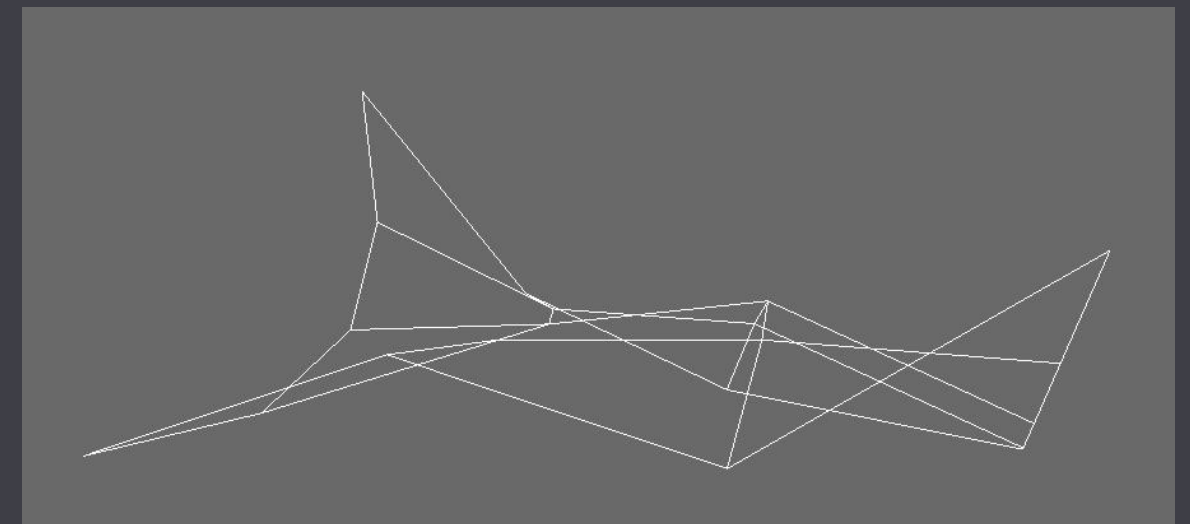




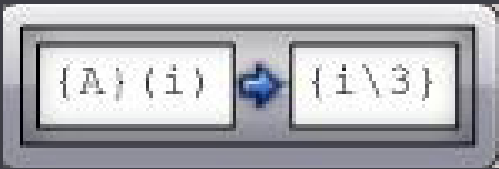
Extract an isoparametric subset of a surface.



Deconstruct a brep into its constituent parts.



Path Mapper

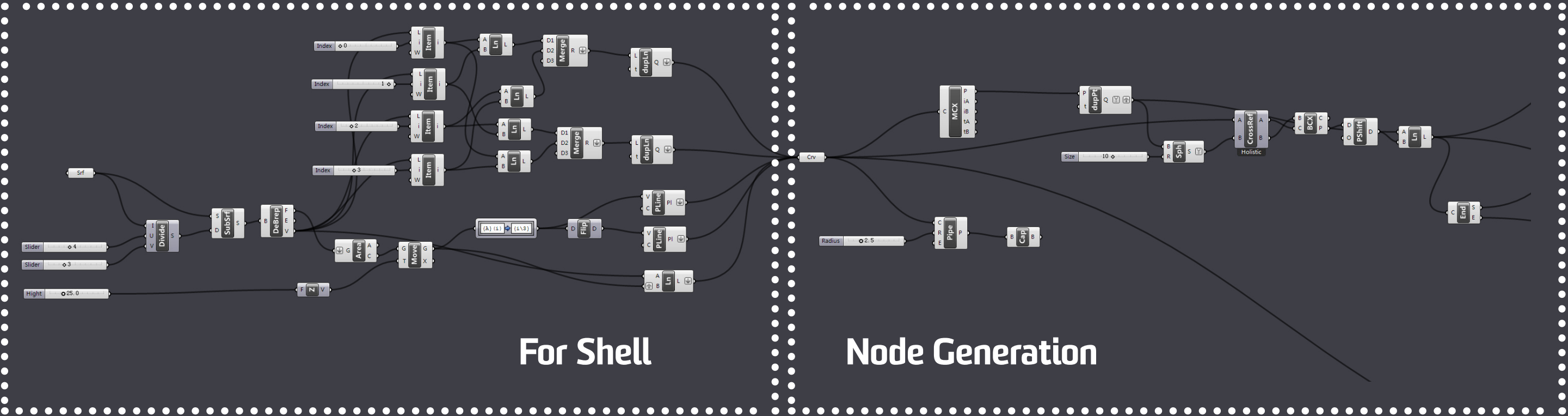
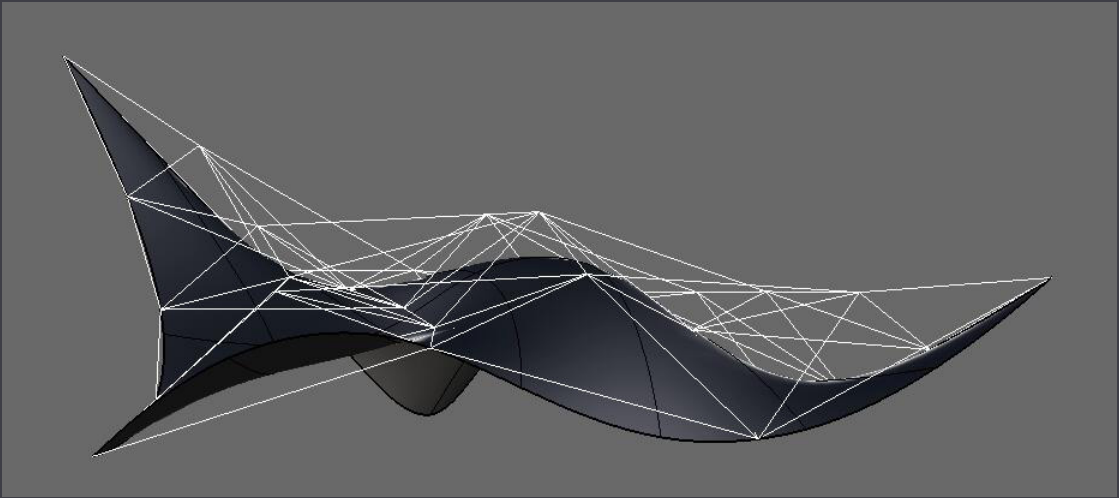


Perform lexical operations on data trees

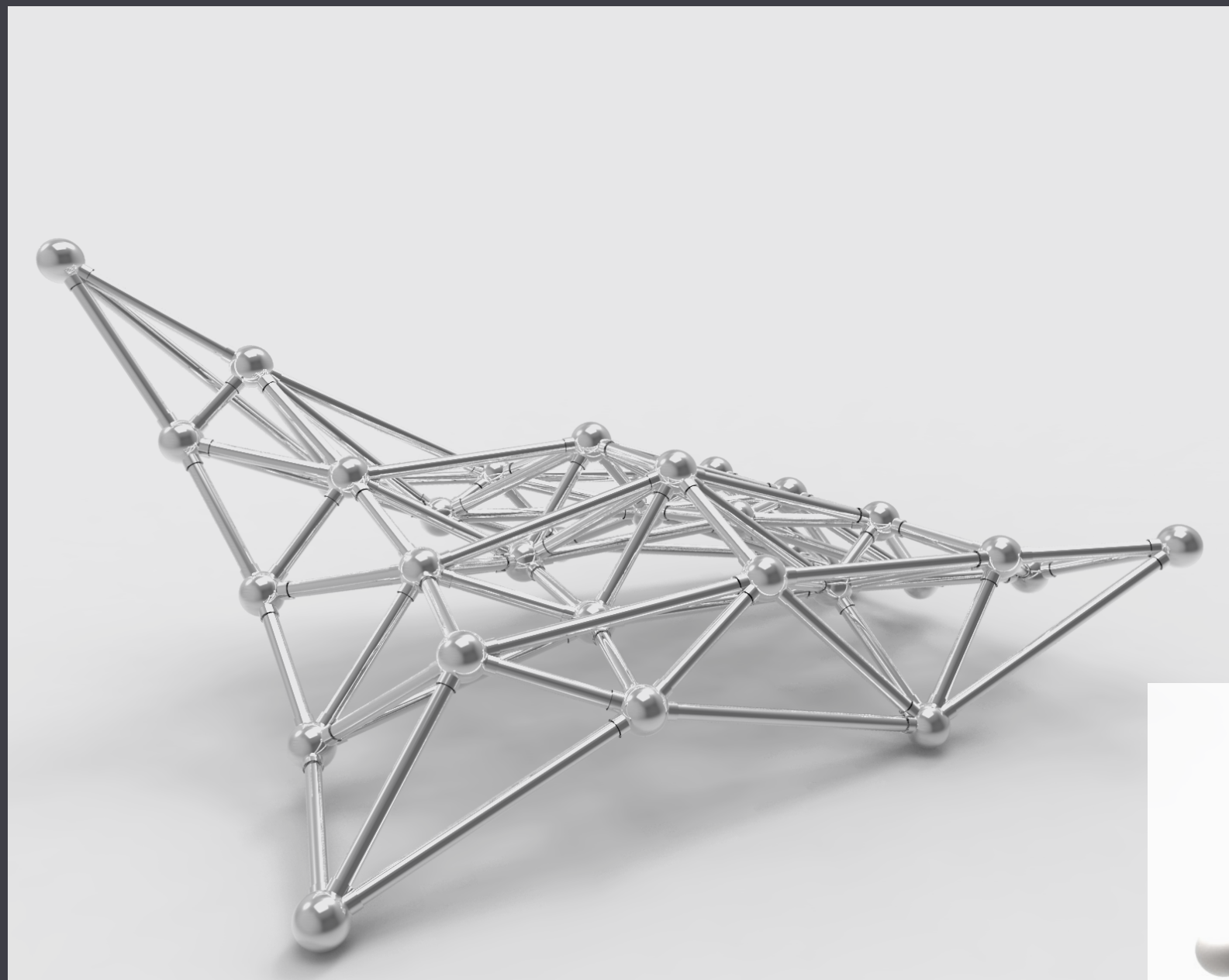
Path Mapper



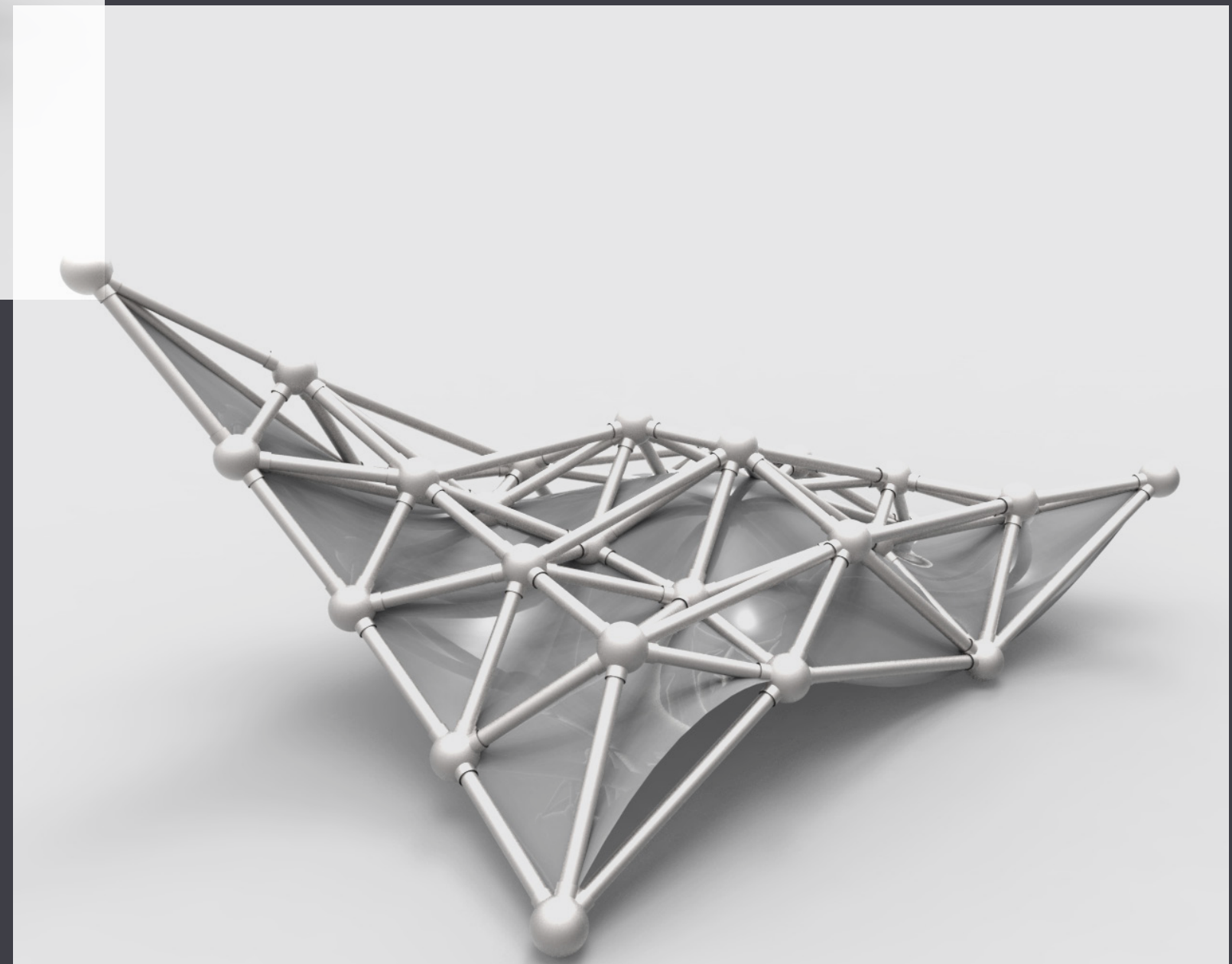
Flip a data matrix by swapping rows and columns.



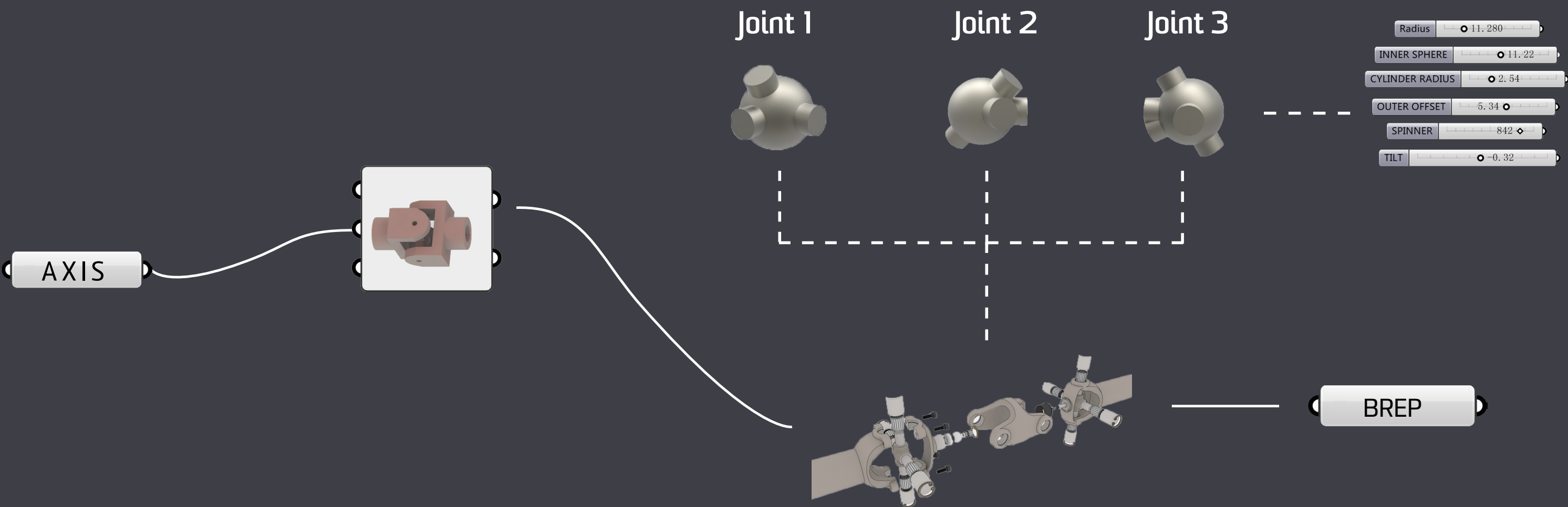
The intersecting line should connect back to " Node generation" script



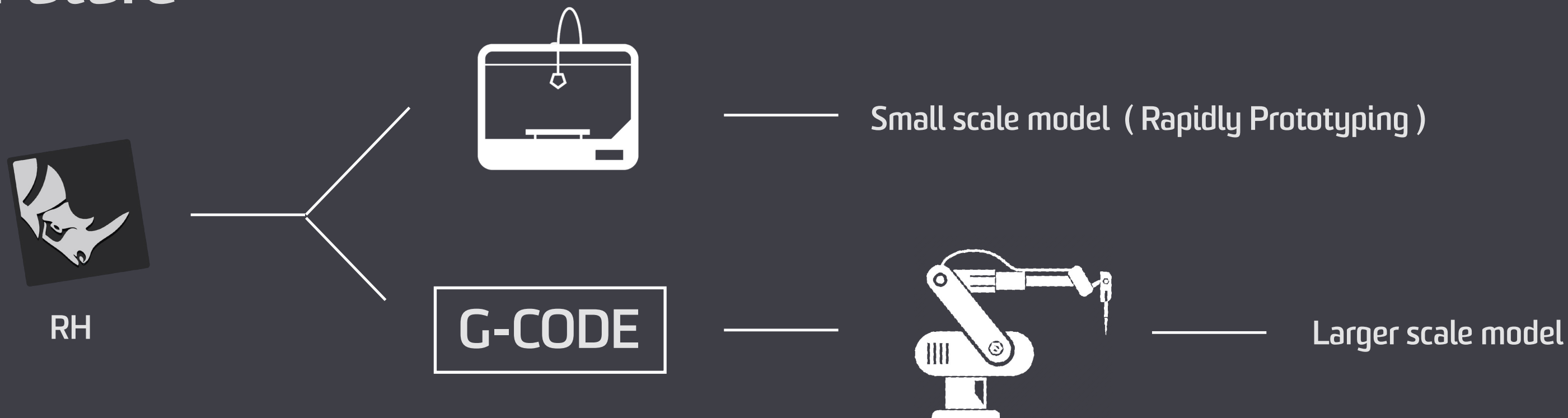
“ Space frame ” with CurveSurface



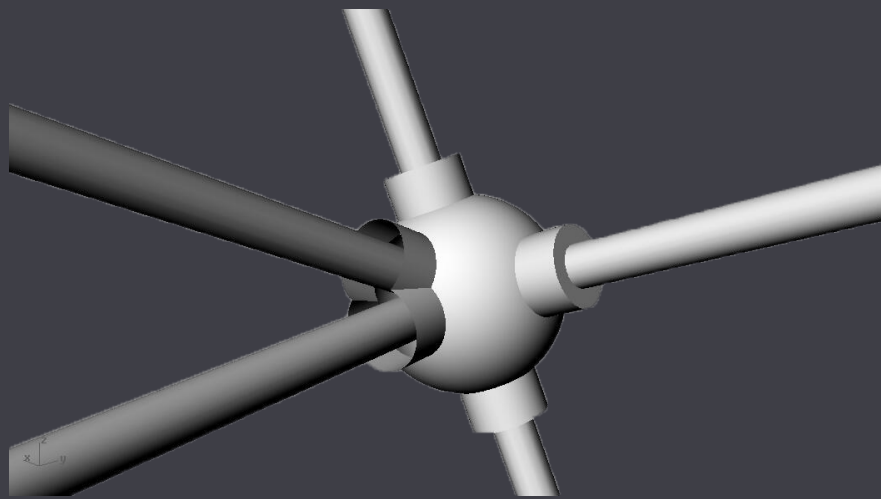
“ Space frame ”



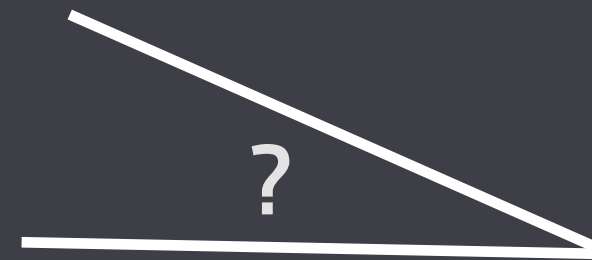
Future



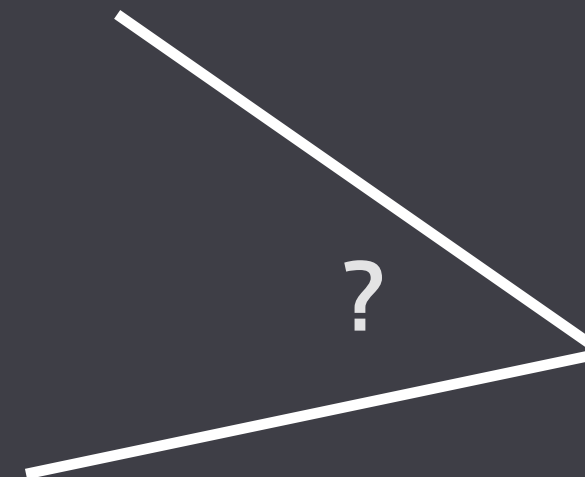
Optimisation - Error Check



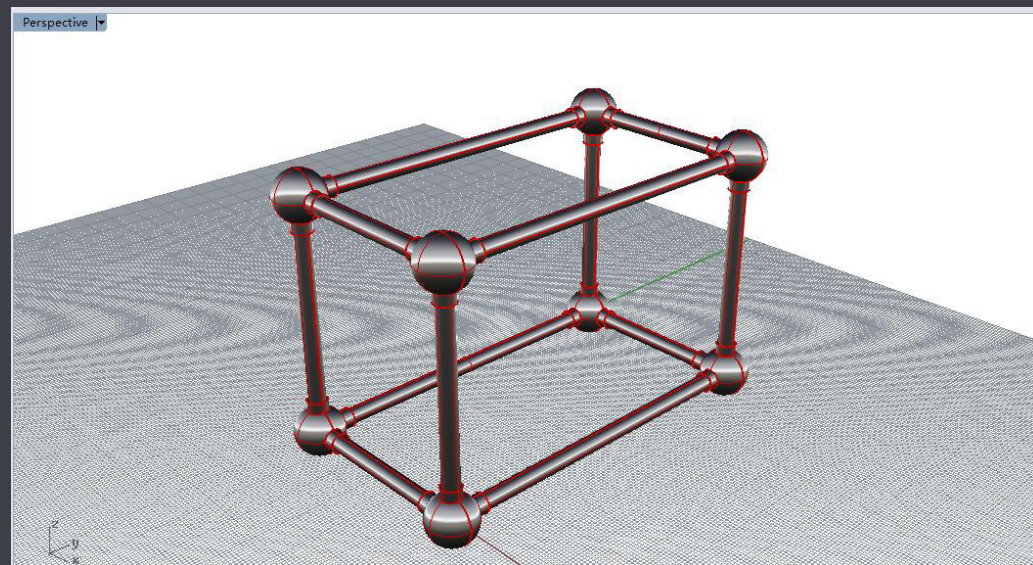
Issue - the apertures join together because the
two intersecting lines are too close



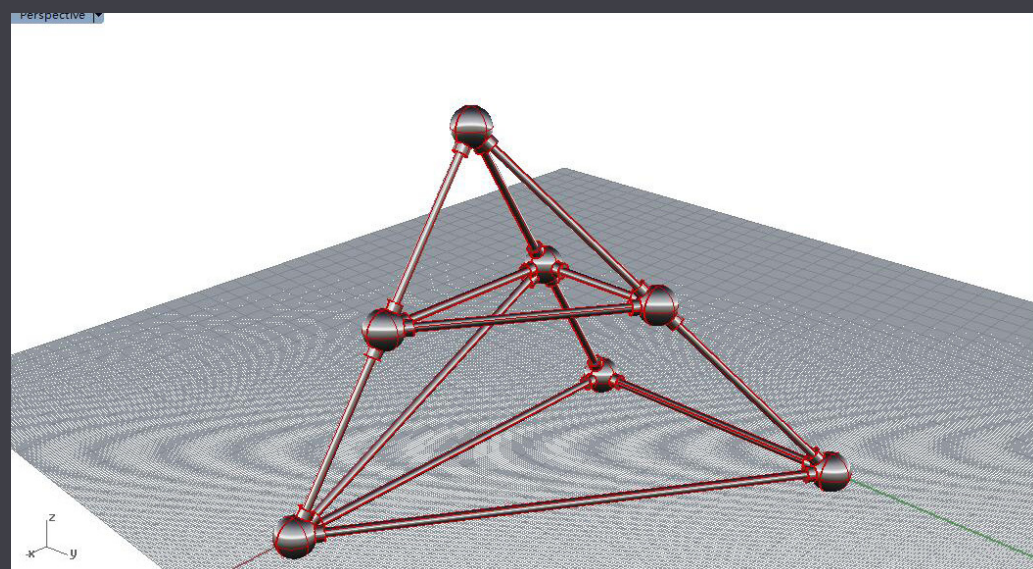
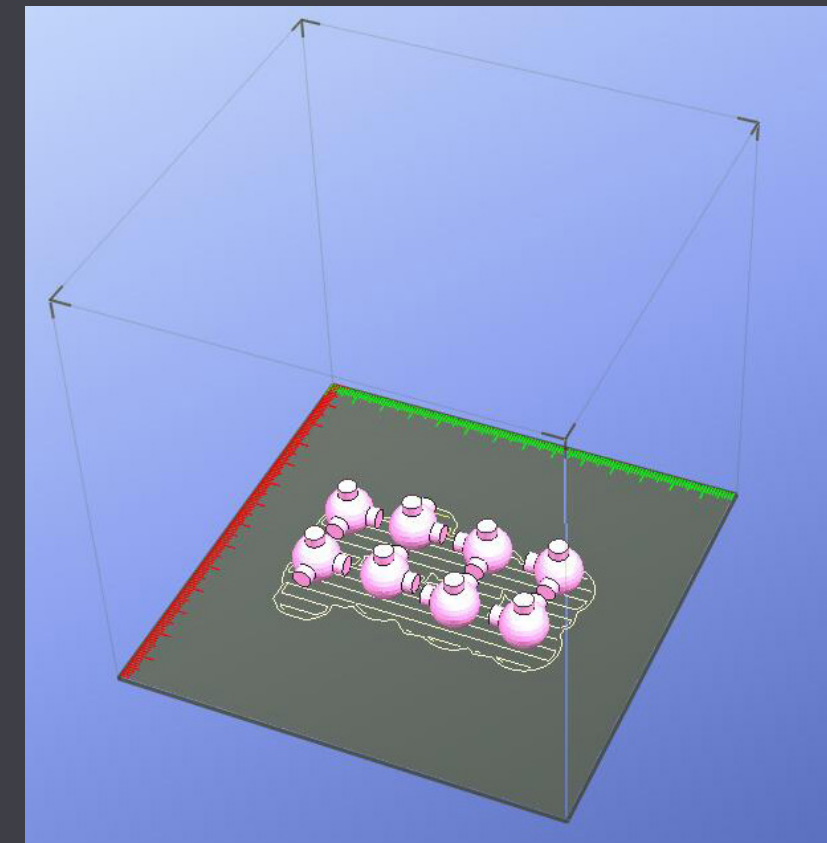
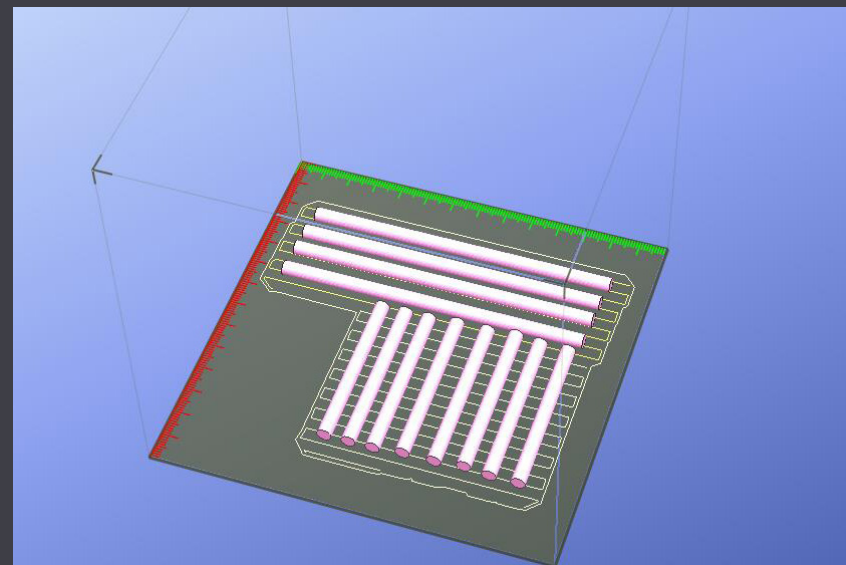
The minimum angle between the two intersecting
lines are ?



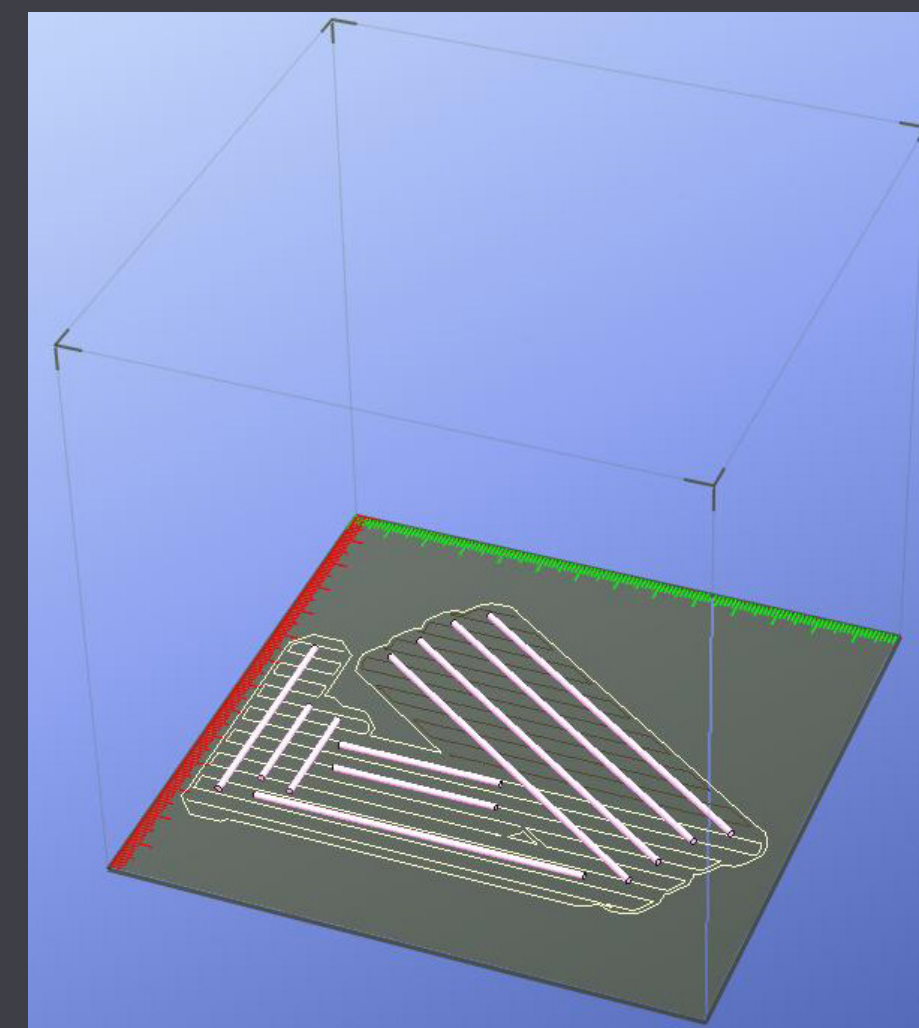
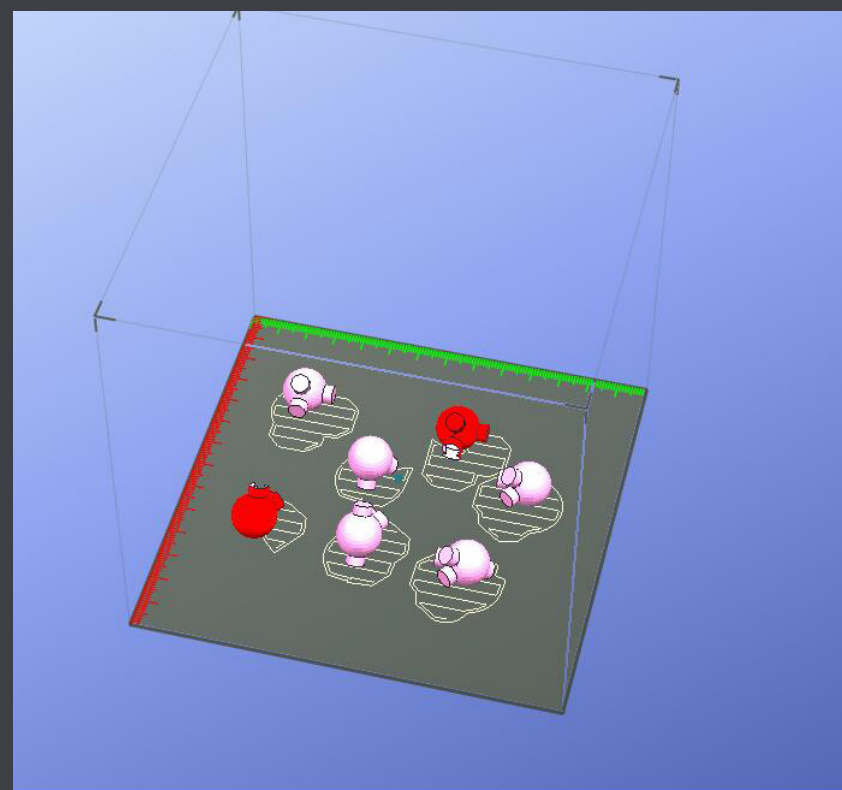
3D Print Experiments



Test 1



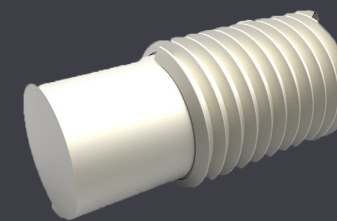
Test 2



For Large Scale Model - Fabrication and Assemble

" A series of sockets each of which is formed into an inner and outer part, the inner part being screw-threaded for receiving a screw-threaded spigot portion of a connector"

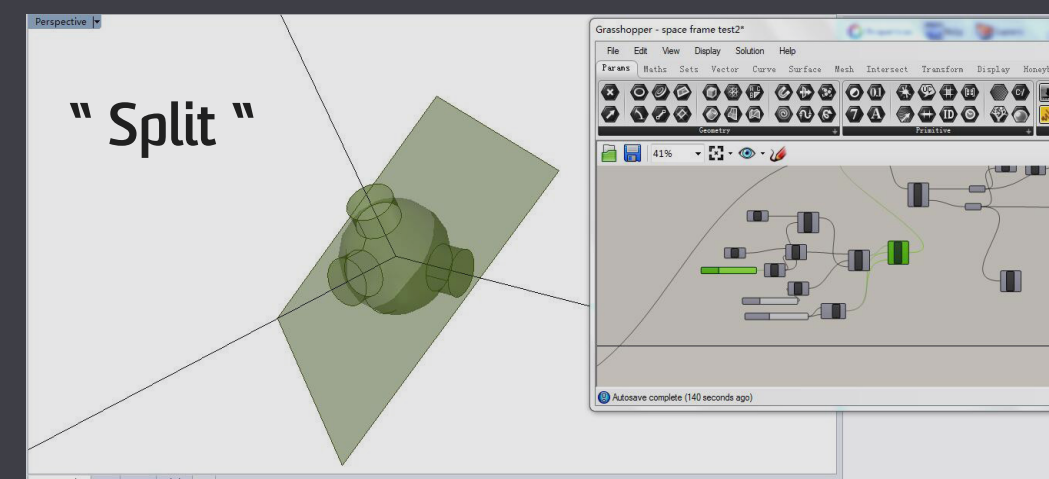
- Kohl Rainer A. (Space frame assembly)



Screw threaded script

" If desired, the spherical member may comprise two hemispheres which are joined together, such as by bolting, or may comprise a substantially unitary sphere. "

- Gugliotta Paul F (Pipe-and-ball truss array)



Construction details research

